

HAAAS  
+  
SOHN

## Livorno II

---

**Equipment sheet**  
Fireplace stove

---

**GB**

# Introduction

**We thank you very much for purchasing our product!**

The description of the heating device will inform you in detail about the design, technical specification and operation of the heating device. We recommend you to acquaint yourselves closely with these data. In this way, you will avoid possible faults during the proper assembly and operation.

**You will find** detailed conditions of installation and operation in General Manual of Operation (included in the scope of the delivery).

## Notes in the text

GB



Of utmost importance there are the notes entitled **WARNING**. The notes entitled **WARNING** advise you on **serious danger of damage to the heating device or of an injury**.



The note entitled **Notice** advises you on possible damage to your heating device.



The note entitled **Important** calls your attention to the information important for the operation of your heating device.



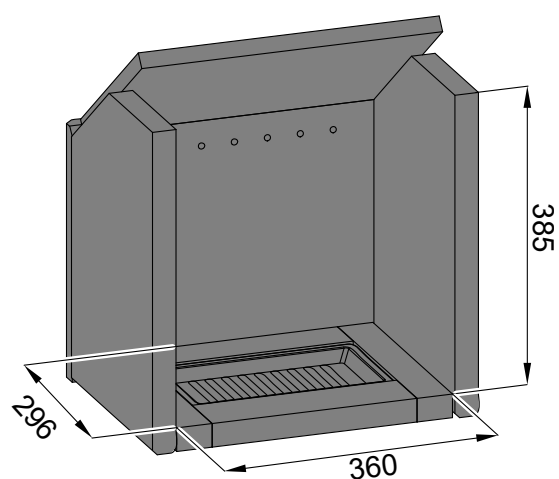
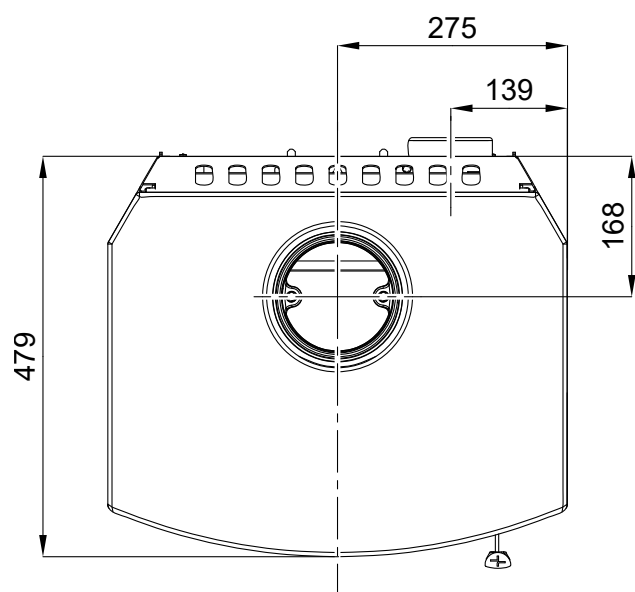
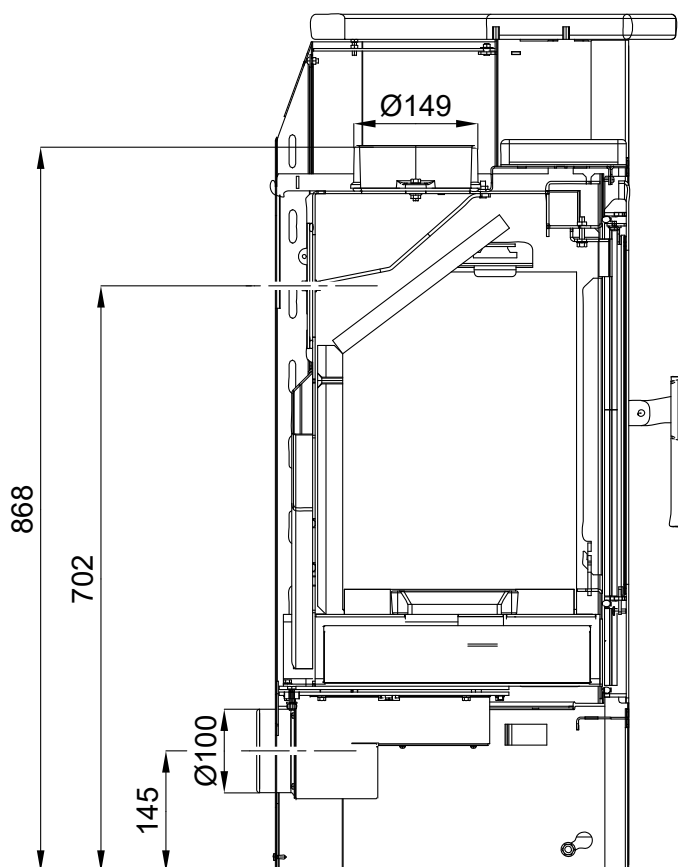
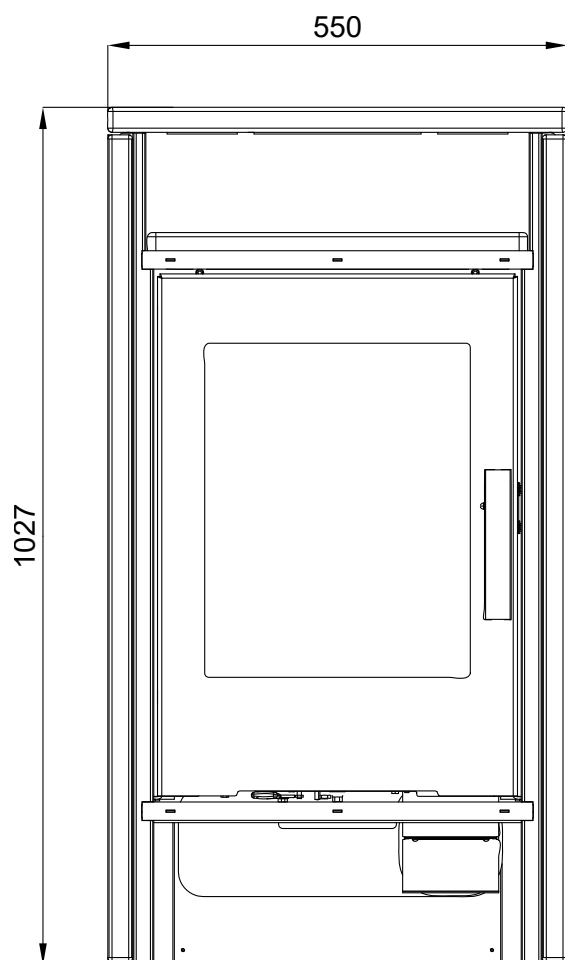
The note itself calls your attention to the information important for the operation of your heating device in general.

# Contents

<b>1. Dimensioned diagram</b> .....	1
<b>2. List of spare parts</b> .....	2
2.1. Whole emplacement.....	2
2.2. Detail A1 .....	4
<b>3. Easy control</b> .....	5
<b>4. Change of the smoke neck</b> .....	6
<b>5. Change of the external air input</b> .....	7
<b>6. Fixing the door in the open position</b> .....	8



# 1. Dimensioned diagram

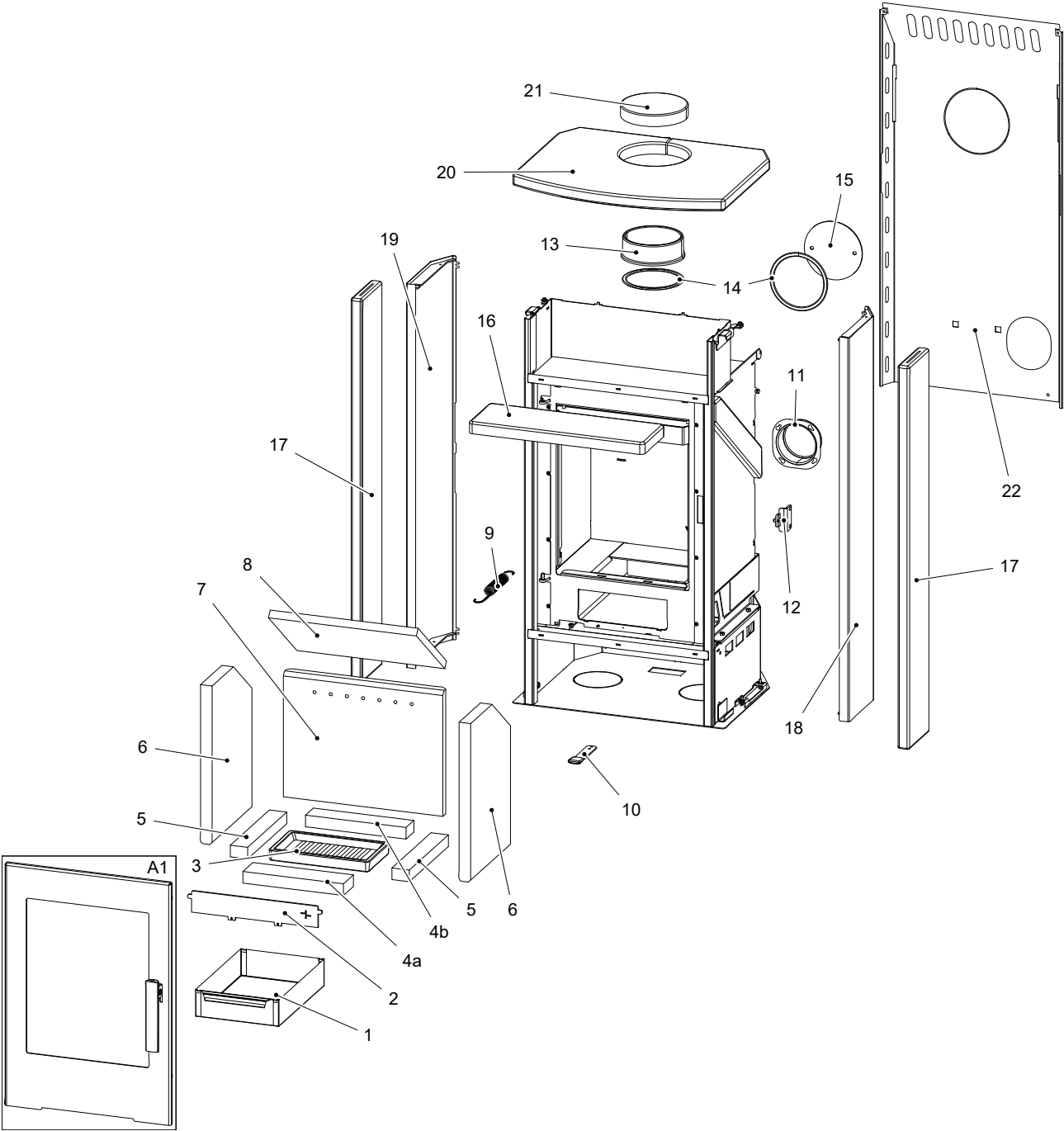


Dimensioned diagram

GB

# 2. List of spare parts

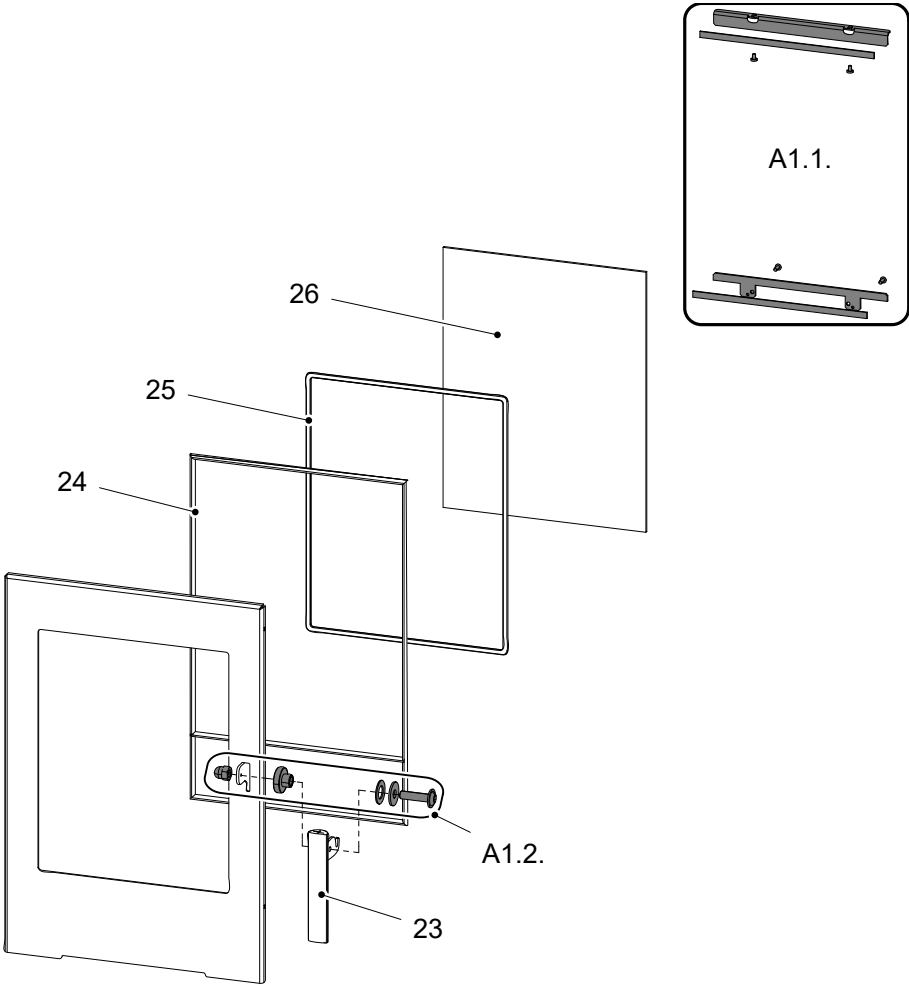
## 2.1. Whole emplacement



Item	Name	Quantity	Number of goods
Whole emplacement			
A1	Fire-box door (complete)/black	1 piece	0424637805300
1	Ashpan	1 piece	0424617405600

<b>2</b>	Protection/black	1 piece	0424617405005
<b>3</b>	Fire grate/black	1 piece	0429415005005
<b>4a</b>	Brick 30x70x261	1 piece	0424617405506
<b>4b</b>	Brick 30x55x261	1 piece	0424637505506
<b>5</b>	Brick 30x45x275	2 piece	0424637505505
<b>6</b>	Lateral brick (30x275x410)	2 piece	0424637505502
<b>7</b>	Rear brick (30x322x414)	1 piece	0424637505501
<b>8</b>	Screen loose (vermiculite)	1 piece	0424617405504
<b>9</b>	Door spring	1 piece	0428612005002
<b>10</b>	Control drawbar/black	1 piece	0424637005015
<b>11</b>	External air input (Ø100)	1 piece	0088500050008
<b>12</b>	Door lock (complete)	1 piece	0424637005001
<b>13</b>	Smoke flue neck/black	1 piece	0494015005020
<b>14</b>	Smoke flue sealing 10x4 mm	470 mm	0040210040005
<b>15</b>	Smoke flue blind flange/black	1 piece	0424617405011
<b>16</b>	Lining of the oven/woodstone	1 piece	0427515176110
<b>16</b>	Lining of the oven/brown stone	1 piece	0427515215110
<b>17</b>	Lateral lining/woodstone	2 piece	0427515176120
<b>17</b>	Lateral lining/brown stone	2 piece	0427515215120
<b>18</b>	Lateral cover — right/black	1 piece	0424637815100
<b>19</b>	Lateral cover — left/black	1 piece	0424637815110
<b>20</b>	Upper lining/woodstone	1 piece	0427515176130
<b>20</b>	Upper lining/brown stone	1 piece	0427515215130
<b>21</b>	Lid plug/woodstone (accessories)	1 piece	0424637801160
<b>21</b>	Lid plug/brown stone (accessories)	1 piece	0424637811160
<b>22</b>	Rear panel	1 piece	0424637805120

2.2. Detail A1



GB

Item	Name	Quantity	Number of goods
Detail A1			
A1.1.	Glass holder – set/black	1 piece	0424637005303
A1.2.	Handle connecting material – set	1 piece	0424637005315
23	Handle	1 piece	0424637805310
24	Door sealing cord 12 mm	2200 mm	0041012120005
25	Glass sealing cord 8x2 mm	1500 mm	0040208020006
26	Refractory glass (4x338x431)	1 piece	0424637005301



# 3. Easy control

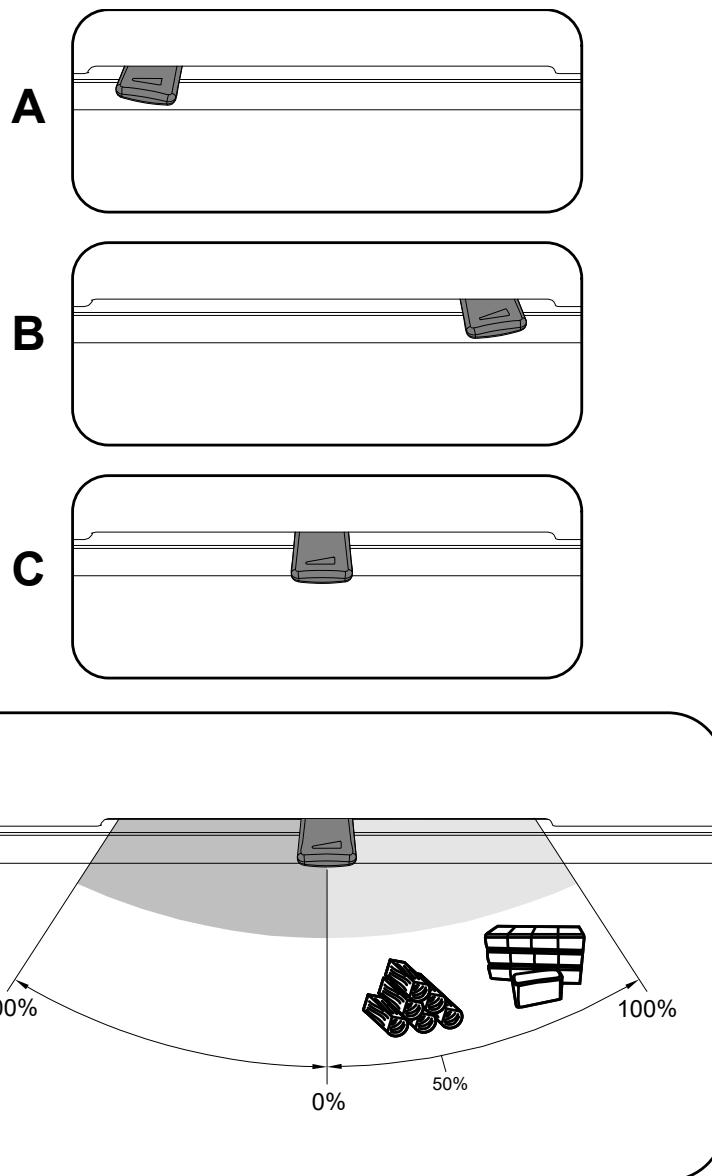
Control of all three air inputs - primary, secondary, tertiary - by means of one sole controller.

1. The controller is in the position intended for ignition (fig. A). All three air inputs are open (primary, secondary, tertiary).
2. The controller is in the position intended for burning of the stove after ignition (fig. B).
3. The controller is in the position designed to close air inputs (Fig. C). No input is open (primary, secondary, tertiary). This position is used only when the stove is out of operation, after finishing the heating process.



## WARNING

Air inputs may not be closed during the heating operation (Fig. C)! In an extreme case, there can occur an explosion in the stove followed by breaking of glass, blowing up of cinders across the room and breaking out of the fire.



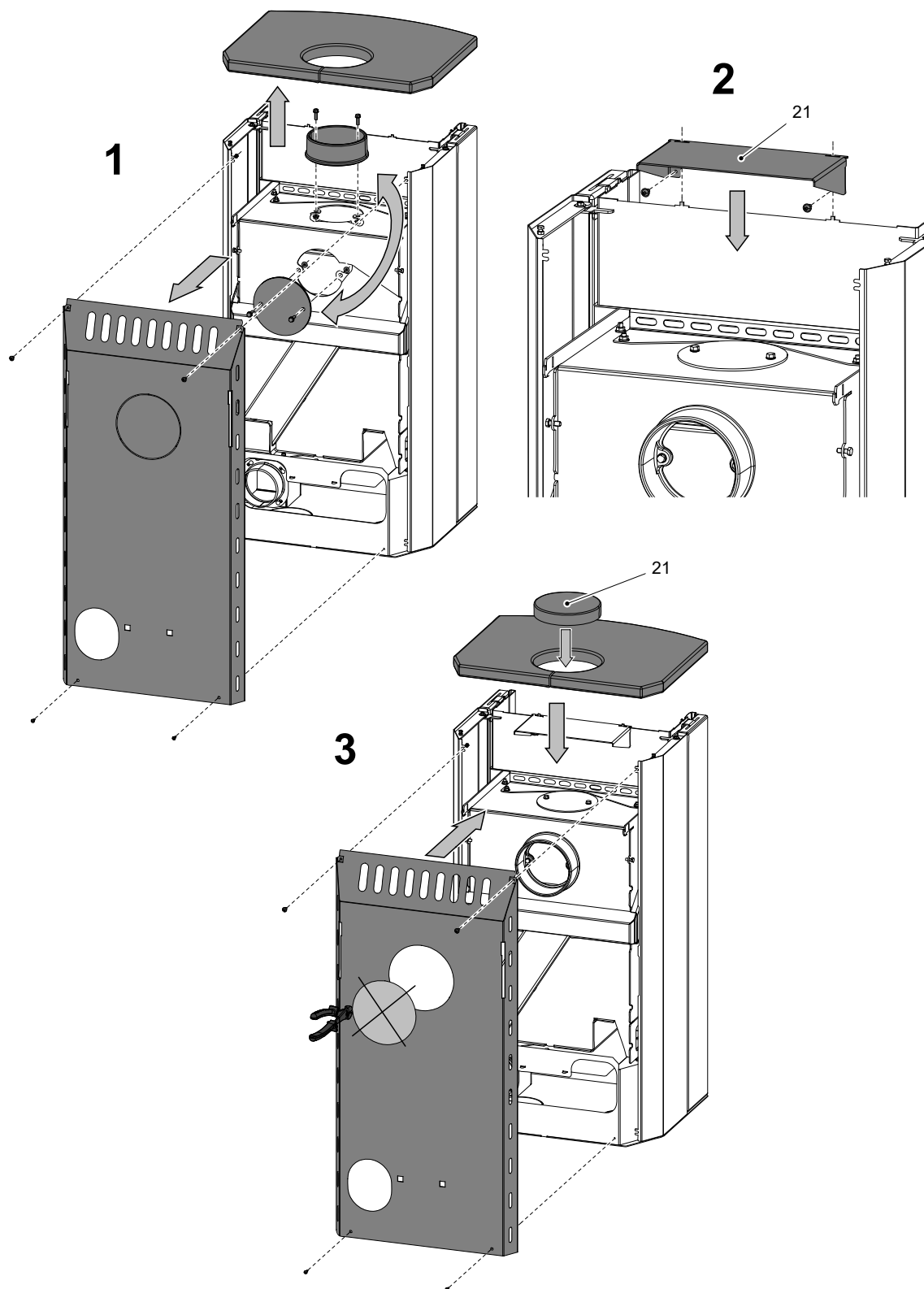
## 4. Change of the smoke neck



Note

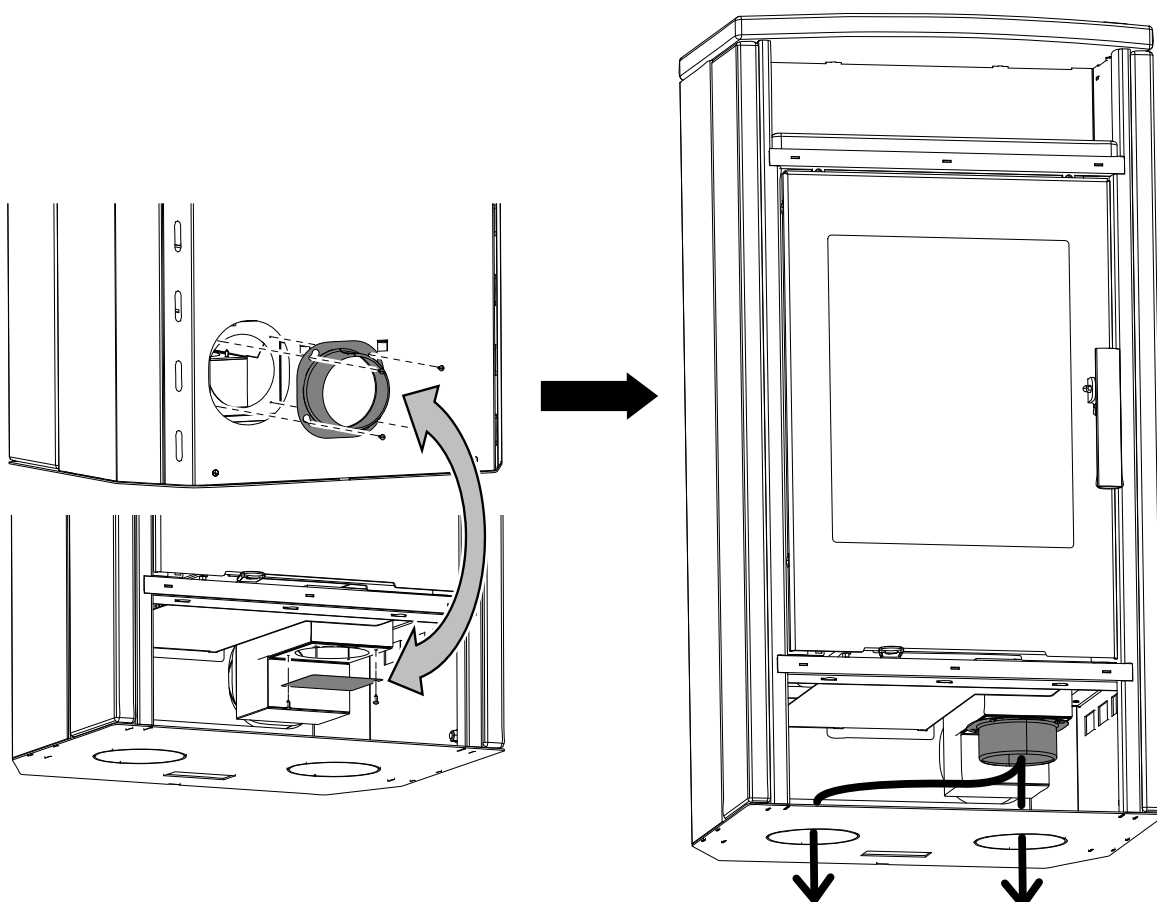
Lid plug item 21 is not included in the delivery.

Change of the smoke neck



GB

## 5. Change of the external air input



Change of the external air input

GB

## 6. Fixing the door in the open position

You can fix the combustion chamber door in the open position to make cleaning more convenient. Use the latch to lock the door open, as shown in the image below.



### WARNING

Never leave the door open during heating!

