

HAAAS  
+  
SOHN

## Avesta II

---

**Equipment sheet**  
Fireplace stove

---

**GB**

# Introduction

**We thank you very much for purchasing our product!**

The description of the heating device will inform you in detail about the design, technical specification and operation of the heating device. We recommend you to acquaint yourselves closely with these data. In this way, you will avoid possible faults during the proper assembly and operation.

**You will find** detailed conditions of installation and operation in General Manual of Operation (included in the scope of the delivery).

## Notes in the text

GB



Of utmost importance there are the notes entitled **WARNING**. The notes entitled **WARNING** advise you on **serious danger of damage to the heating device or of an injury**.



The note entitled **Notice** advises you on possible damage to your heating device.



The note entitled **Important** calls your attention to the information important for the operation of your heating device.



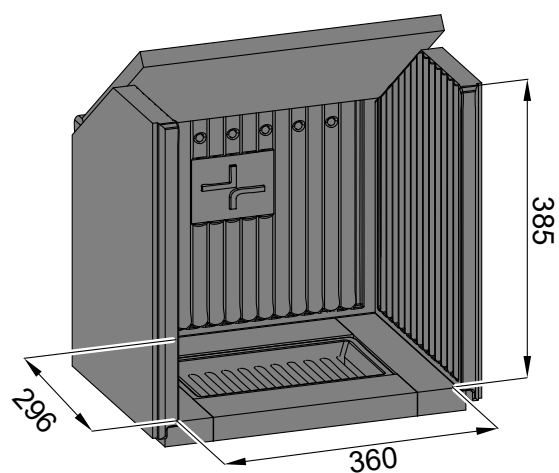
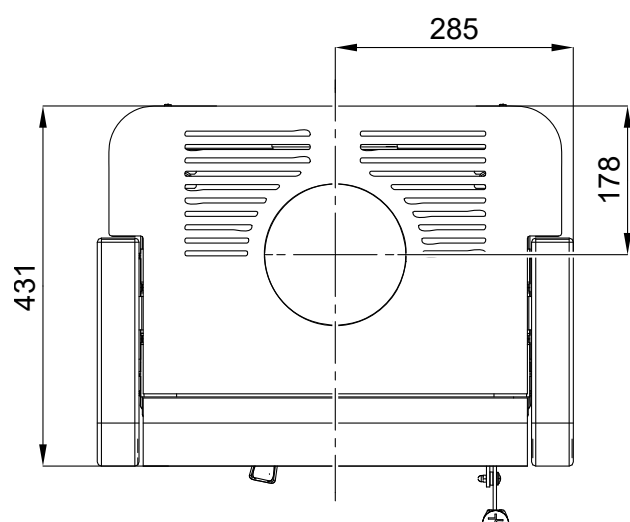
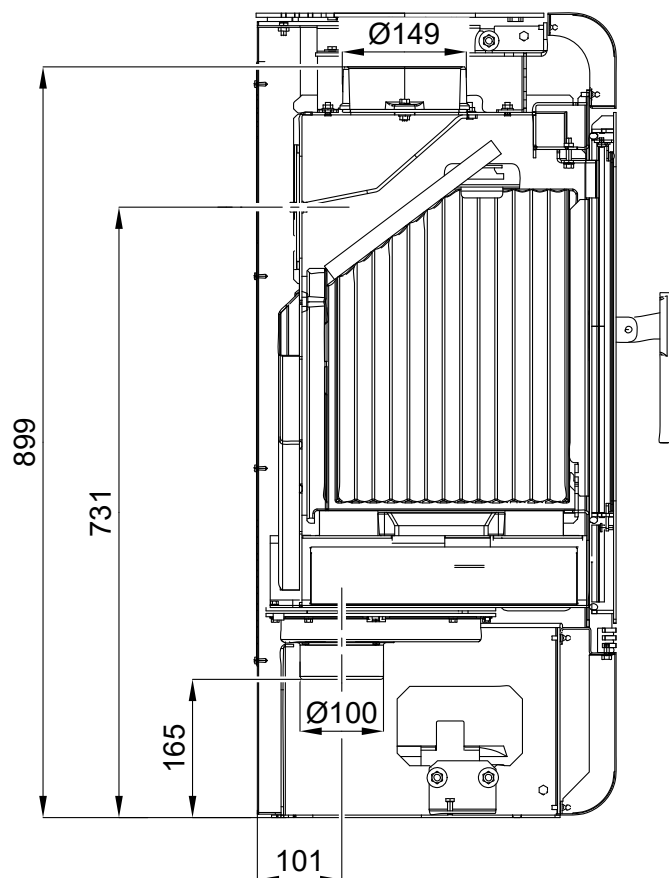
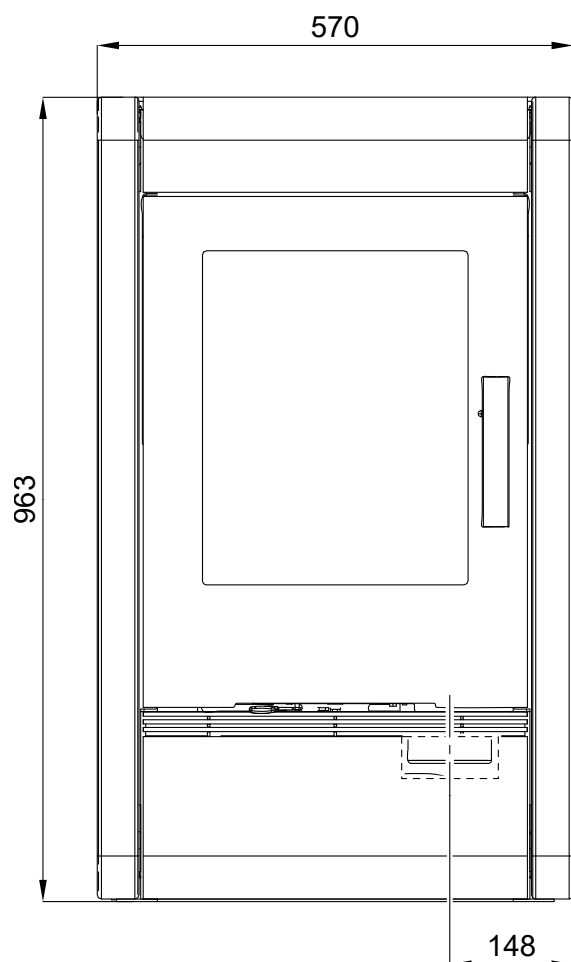
The note itself calls your attention to the information important for the operation of your heating device in general.

# Contents

<b>1. Dimensioned diagram</b>	1
<b>2. List of spare parts</b>	2
2.1. Whole emplacement	2
2.2. Detail A1	4
<b>3. Easy control</b>	5
<b>4. Change of the smoke neck</b>	6
<b>5. Change of the external air input</b>	7
<b>6. Fixing the door in the open position</b>	8



# 1. Dimensioned diagram

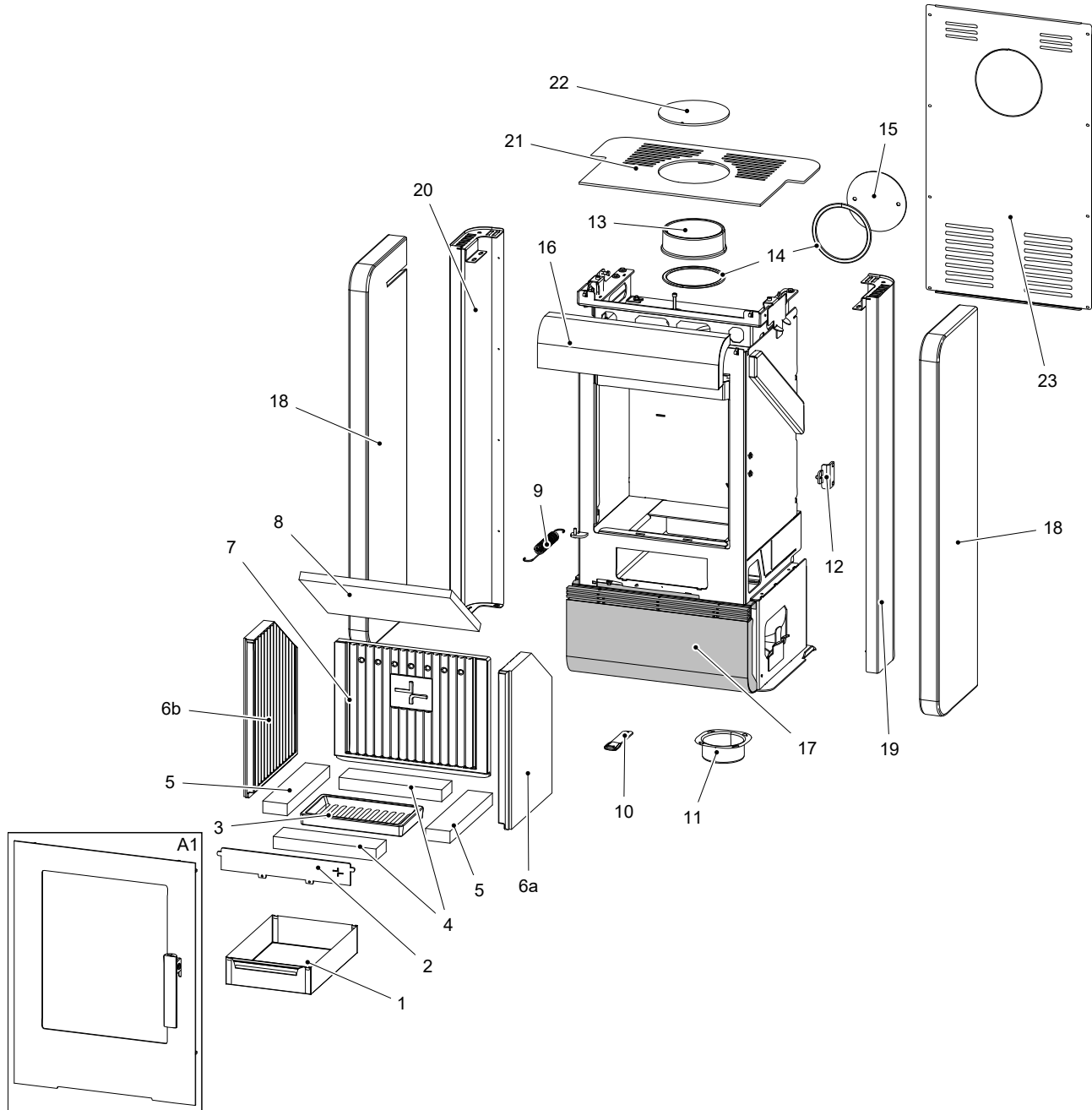


Dimensioned diagram

GB

## 2. List of spare parts

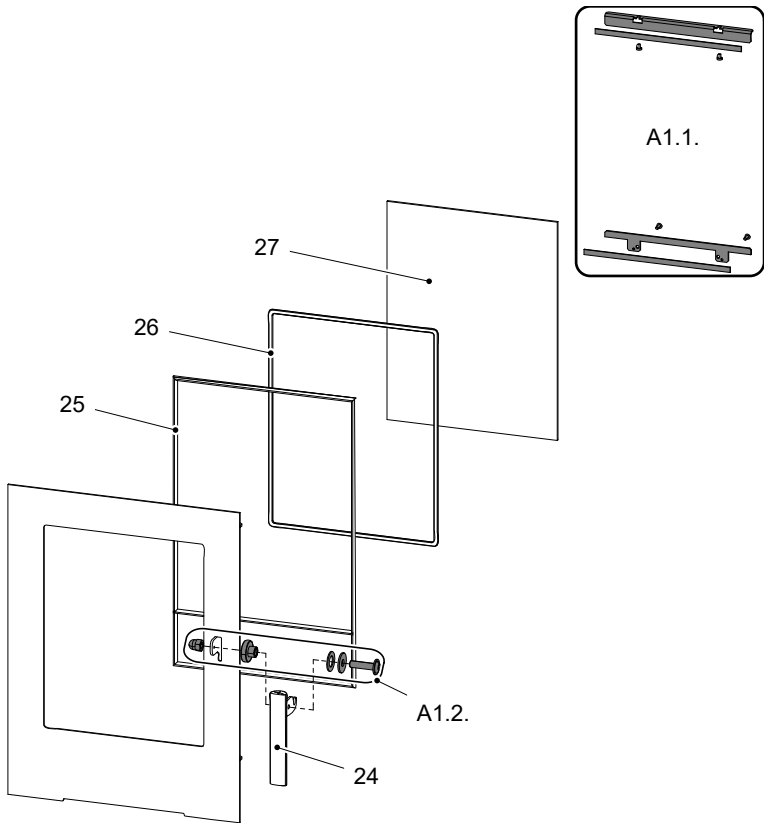
### 2.1. Whole emplacement



Item	Name	Quantity	Number of goods
<b>Whole emplacement</b>			
<b>A1</b>	Fire-box door (complete)/black	1 piece	0424637605300
<b>1</b>	Ashpan	1 piece	0424617405600
<b>2</b>	Protection/black	1 piece	0424617405005

<b>3</b>	Fire grate/black	1 piece	0429415005005
<b>4</b>	Brick 30x70x261	2 piece	0424617405506
<b>5</b>	Brick 30x62x292	2 piece	0424617405505
<b>6a</b>	Refractory lining – right (30x300x415)	1 piece	0428315005502
<b>6b</b>	Refractory lining – left (30x300x415)	1 piece	0428315005503
<b>7</b>	Refractory lining – rear (30x390x320)	1 piece	0428315005501
<b>8</b>	Screen loose (vermiculite)	1 piece	0424617405504
<b>9</b>	Door spring	1 piece	0428612005002
<b>10</b>	Control drawbar/black	1 piece	0424637705015
<b>11</b>	External air input (Ø100)	1 piece	0088500050008
<b>12</b>	Door lock (complete)	1 piece	0424637005001
<b>13</b>	Smoke flue neck/black	1 piece	0494015005020
<b>14</b>	Smoke flue sealing 10x4 mm	470 mm	0040210040005
<b>15</b>	Smoke flue blind flange/black	1 piece	0424617405011
<b>16</b>	Front panel/black	1 piece	0424637605010
<b>17</b>	Bottom panel/black	1 piece	0424637605930
<b>18</b>	Lateral panel/Woodstone Prestige	2 piece	0434615105050
<b>19</b>	Lateral cover — right/black	1 piece	0424637605060
<b>20</b>	Lateral cover — left/black	1 piece	0424637605050
<b>21</b>	Upper lid/black	1 piece	0424637605070
<b>22</b>	Lid plug/black	1 piece	0424617405004
<b>23</b>	Rear panel	1 piece	0424637605080

2.2. Detail A1



Item	Name	Quantity	Number of goods
Detail A1			
A1.1.	Glass holder – set/black	1 piece	0424637005303
A1.2.	Handle connecting material – set	1 piece	0424637005315
24	Handle	1 piece	0424618005310
25	Door sealing cord 12 mm	2200 mm	0040300100005
26	Glass sealing cord 8x2 mm	1500 mm	0040208020006
27	Refractory glass (4x338x431)	1 piece	0424637005301



# 3. Easy control

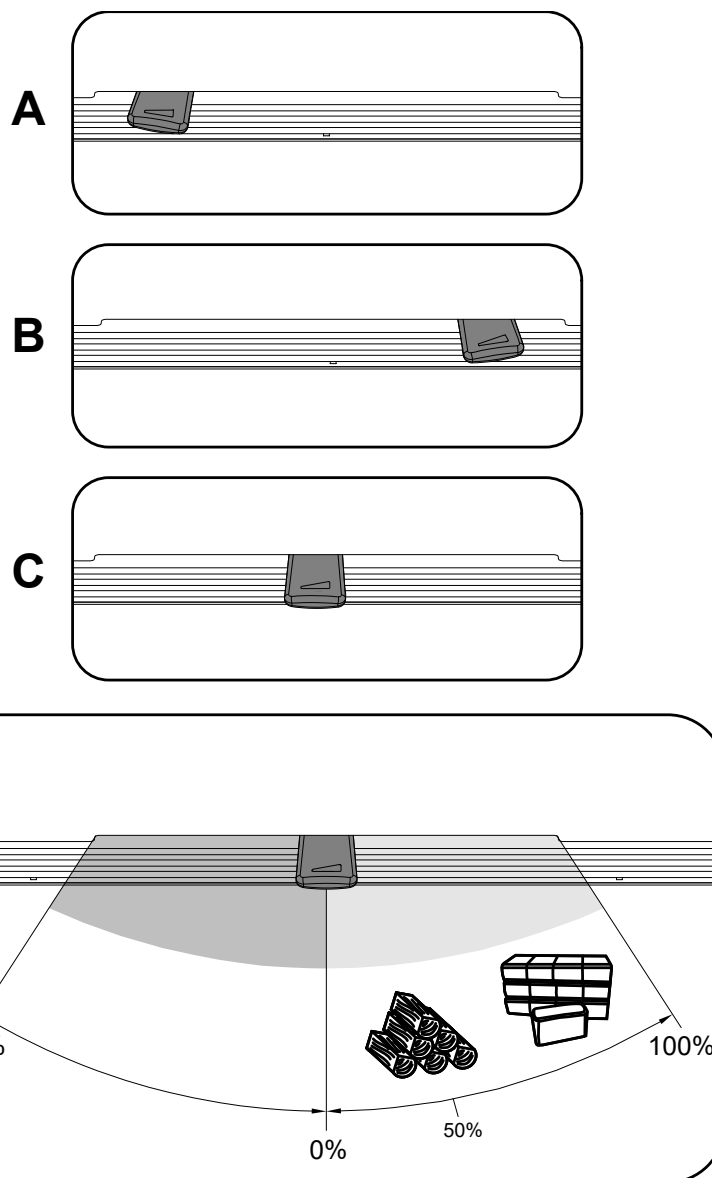
Control of all three air inputs - primary, secondary, tertiary - by means of one sole controller.

1. The controller is in the position intended for ignition (fig. A). All three air inputs are open (primary, secondary, tertiary).
2. The controller is in the position intended for burning of the stove after ignition (fig. B).
3. The controller is in the position designed to close air inputs (Fig. C). No input is open (primary, secondary, tertiary). This position is used only when the stove is out of operation, after finishing the heating process.



## WARNING

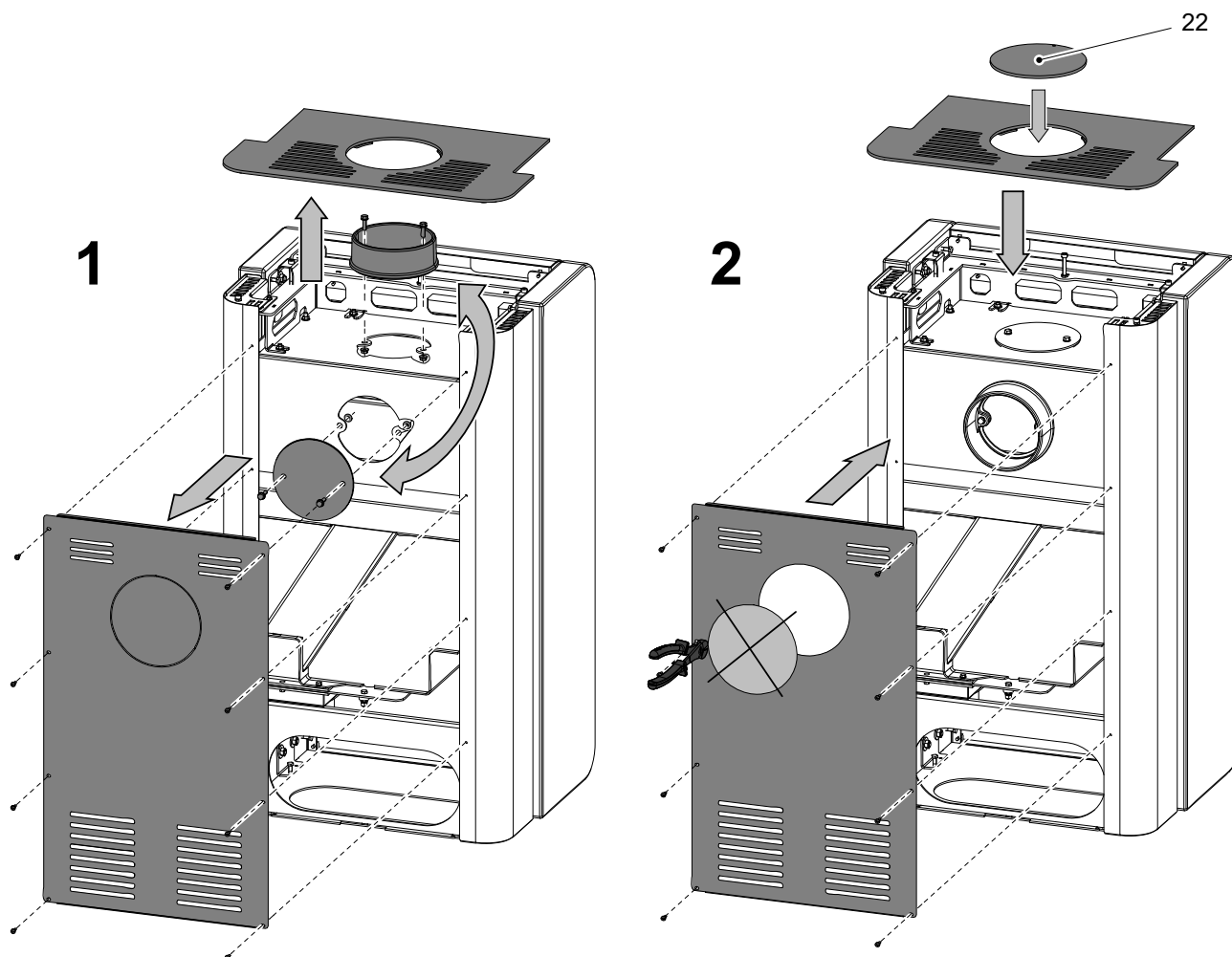
Air inputs may not be closed during the heating operation (Fig. C)! In an extreme case, there can occur an explosion in the stove followed by breaking of glass, blowing up of cinders across the room and breaking out of the fire.



## 4. Change of the smoke neck

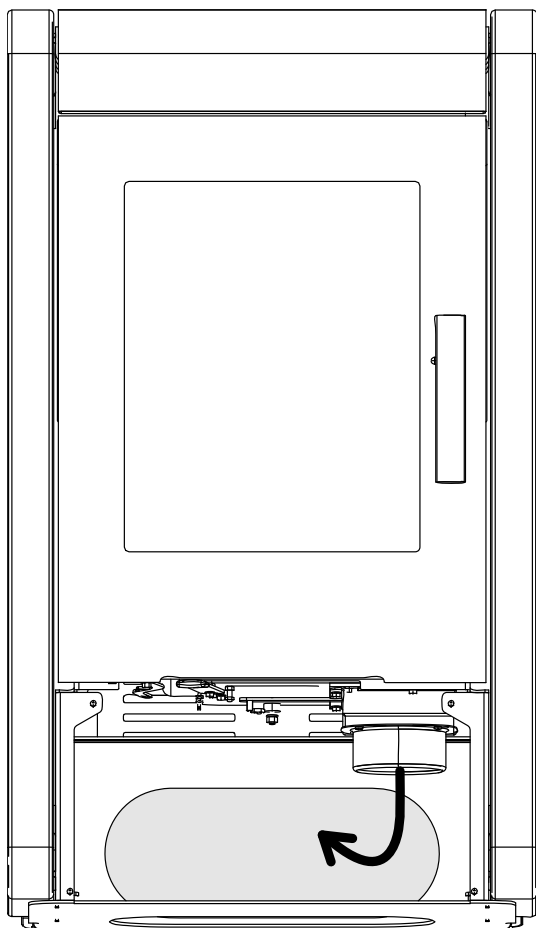
Change of the smoke neck

GB

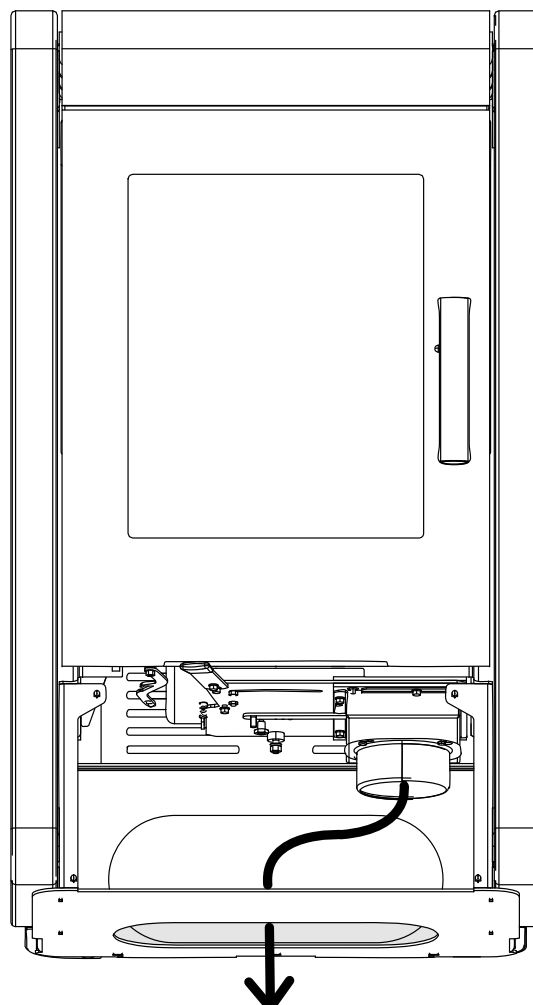


## 5. Change of the external air input

**A**



**B**



Change of the external air input

GB

## 6. Fixing the door in the open position

You can fix the combustion chamber door in the open position to make cleaning more convenient. Use the latch to lock the door open, as shown in the image below.



### **WARNING**

**Never leave the door open during heating!**

